

How to join “bsusecure” using Windows Vista

It is a requirement that the device uses Windows to configure wireless networks and not third party clients such as the Intel PROset application.

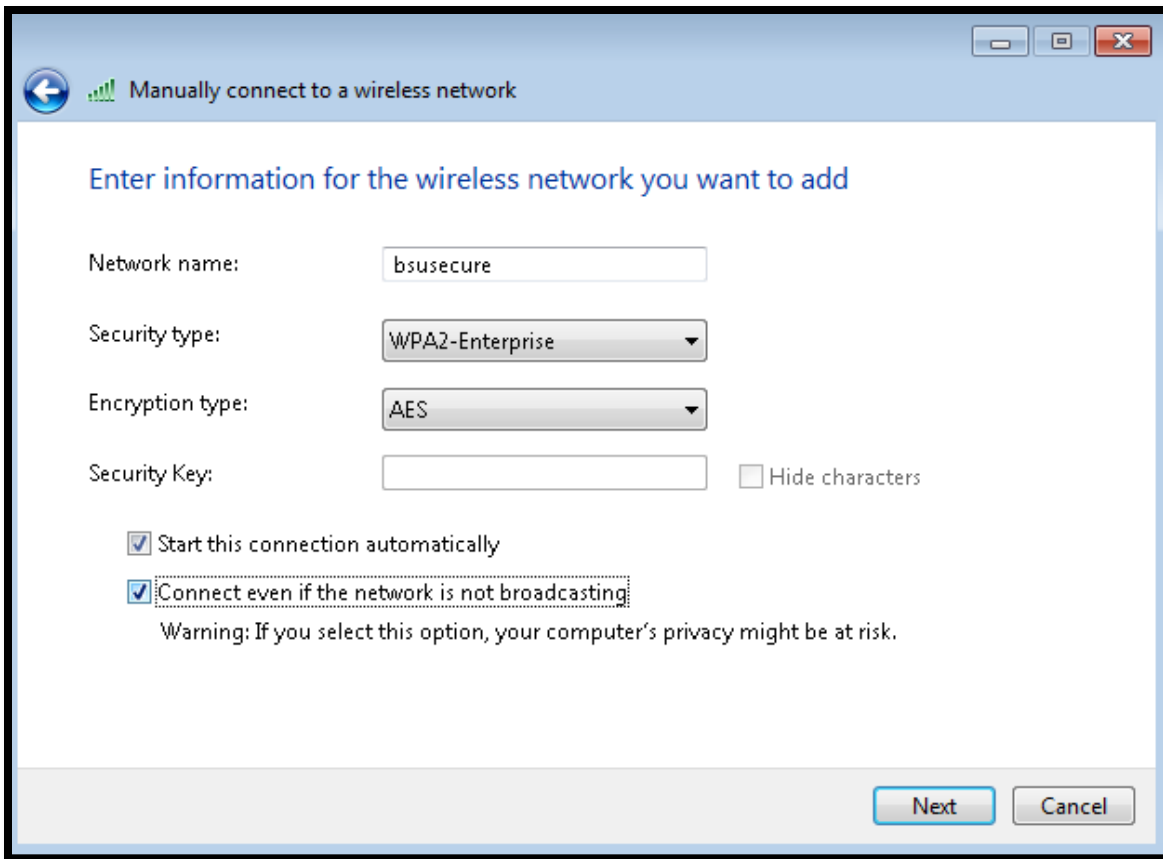
1. Open **Network Sharing Center** (right click on wireless icon in system tray)



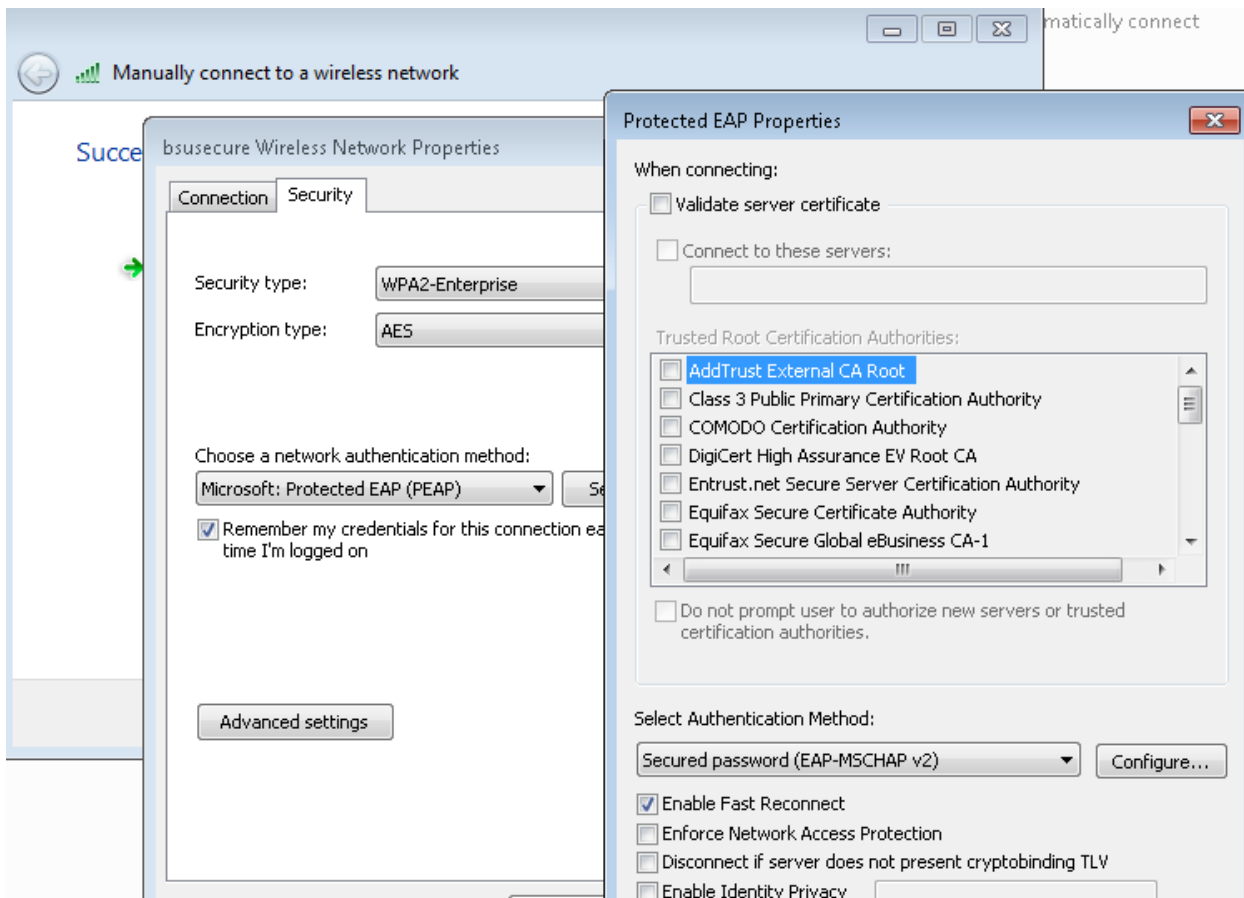
2. Click **Manage Wireless Networks** (located in left panel)



3. Click **Add**
4. Select **Manually create a network profile**
5. Enter the following information:
 - Network Name: **bsusecure**
 - Security Type: **WPA2-Enterprise**
 - Encryption Type: **AES**
 - Security Key/Pass Phrase: Leave Blank



6. Check **Connect even if the network is not broadcasting**
7. Click **Next**
8. Click **Change Connection Settings**
9. Click on the **Security Tab**
10. Make sure the **Authentication Method is set for Microsoft: Protected EAP (PEAP)**
11. Click on the **Settings** button
12. Uncheck **Validate Server Certificate**
13. Verify **Authentication Method** is set to **EAP-MSCHAP v2**



If the device is on the bsu.edu domain click OK and then Close, if not on the domain continue with steps 14-20. Follow the four steps below to determine if your device is on the domain.

1. To determine whether or not the computer is on the domain, click on the start button and right-click on "Computer"
2. Click on "Properties"
3. View the "Computer name, domain and work group settings" area of the System page
4. The computer shown below is not on the bsu.edu domain

System

Rating: **5.9** Windows Experience Index

Processor: Intel(R) Core(TM) i7 CPU 920 @ 2.67GHz 3.79 GHz

Installed memory (RAM): 6.00 GB

System type: 64-bit Operating System

Pen and Touch: No Pen or Touch Input is available for this Display

Computer name, domain, and work group settings

Computer name: Chinook

Full computer name: Chinook

Computer description:

Workgroup: WORKGROUP

14. Click on the **Configure** button

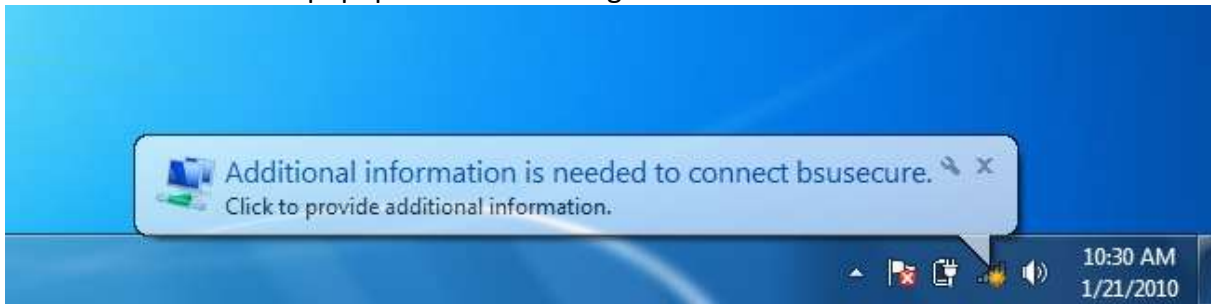
15. Uncheck **Automatically use my Windows Login name...** and click **OK**

16. Click **OK**

17. Click **OK**

18. Click **Close**

19. Click on credentials popup in the bottom-right corner of the screen



20. Enter **BSU** for the domain and enter your **username/password**