



OWL HOOTS

Burris Laboratory School
Ball State University
Muncie, IN 47306
Telephone 765-285-1131
Fax 765-285-8620

VOLUME 11-12, No. 2

OCTOBER/NOVEMBER 2011

Principal Dr. Jay McGee
Asst. Principal Ms. Lisa Berry

Strategic Planning

WE'RE ON THE WEB!
WWW.BSU.EDU/BURRIS

This year Burris will be going through a strategic planning process. The purpose of developing a strategic plan is to guide the activities of the organization by providing goals, objectives, and action steps fulfilling the school vision and mission. Administrators, teachers, support staff, students and parents will be involved in developing the strategic plan. Burris developed and approved a mission and vision statement last year. The Burris faculty has voted to unanimously approve both of these guiding statements. This vision and mission will be a major part of guiding the strategic planning process. The vision and mission represent a commitment to excellence by all faculty and staff and can be achieved only through a concerted effort on the part of the teachers, students, Burris families, the University, and the Burris administration.

The Burris vision is:

Burris Laboratory School will be recognized as an outstanding laboratory school in the United States for exemplary practices in the areas of:

- student achievement in core content areas,
- student engagement in the fine and practical arts,
- student character development and healthy lifestyle practices,
- teacher training,
- educational research,
- partnerships with Ball State University and with other national and international schools and universities.

The Burris Mission is:

As its mission, the Burris Laboratory School, a department of the Teachers' College, provides the development, demonstration, and dissemination of effective and innovative teaching practices, offers an exemplary pre-service clinical program for teaching majors, accommodates research and operates an educationally sound instructional program for its K-12 population. This mission is based on the belief that all students can learn and will be empowered to develop their fullest intellectual, social, artistic, and physical potentials.

Throughout this year, members of the Burris community will be meeting to determine specific goals and strategies for realizing the school vision and mission.

.....
Inside this issue:

Letter from Dr. McGee.....	2
State and National Recognitions.....	3
Arrival/Dismissal Times	3
Attendance/Tardy Policy... ..	4
After School Help	4
Notes from the Nurse	5
HS Art News	5
Fees	6
Cafeteria Notice.....	6
Veteran's Day Program	6
Spooky Fall Concert	6
Grades 4 and 5 News.....	7
Guidance Office News.....	8-9
Asbestos Management Plan & Pesticide Notification Registry.....	9
Calendar.....	10

Fall Break—October 17 and 18—No School

Included in this mailing: Cafeteria Menus for October and November, H.O.O.T. Cards Flyers, Marsh Fresh Ideas for Education Flyer

Letter from Dr. McGee

Hello Parents,

The school year is off to a great start. I cannot believe we are nearly at the end of the first quarter of the school year. Several changes were put into place over the summer. Some parents wondered why it was so late in the summer that decisions were finalized. I have provided answers to a few questions I received after the start of school.

Regarding the decision to implement a full-day kindergarten program:

Although the topic of full-day kindergarten had been discussed for several years, it was not until April 2011 that the State of Indiana made the commitment to provide additional funding for kindergarten and not until May 2011 that PL 229-2011 passed allocating 81.9 million dollars to partially fund full-day kindergarten. Issues such as funding, availability of a classroom space, needed renovations, etc. were discussed and in early July a decision was made to move forward with full-day kindergarten. This program is a benefit to our youngest students who will be immersed in a full-day of outstanding learning experiences and to university students that do their observation and field work in kindergarten classrooms modeling a full-day program.

Regarding extending the elementary school day:

Meetings were held with elementary teachers to discuss extending the school day beginning in January 2011. Once the elementary teachers were on board, the proposal was given serious consideration. The issue was complicated by the fact that an increase in the school day is related to a possible increase in teacher compensation. A decision was made to review overall teacher compensation at Burriss as a part of on-going deliberations. Research was conducted throughout the late spring comparing teacher salary and benefits with the salary and benefits of nearby school districts. A review of compensation models continued into the summer. A decision to move forward with this proposal was made in late July. Meetings were held with representative groups of parents and teachers from July 25-27. These meetings showed overwhelming support for extending the day. After further review, a financial plan was developed and a final proposal was made to the University administration and was approved August 9.

Regarding employing teachers:

The process of employing teachers at Burriss/BSU is complex. Once an opening is available due to the creation of a new position or from a resignation the following steps must be followed: 1) a job description is created or revised; 2) an Exemption from the Hiring Freeze and a Request to Fill forms are completed and forwarded to the University administration for approval; 3) once the position is approved it is posted on the BSU web site and in newspapers. This process can take from 3-4 weeks. Meanwhile, 4) a search committee is formed at the school; 5) after a position is posted 2-3 weeks is allowed for applications to come in; 6) the search committee reviews applications, checks references for preferred candidates and enters a Request to Interview form that also must be approved through the university. This can take another week; 7) once candidates are approved to be interviewed they are contacted by someone at Burriss and scheduled to meet with the search committee for 1-2 hours. Each candidate does a sample lesson with Burriss students and is interviewed by the committee. It can take 2-3 days for interviews; 8) If there is no one recommended to be hired after the first round of interviews, the process begins again with reviewing applications, checking references and requesting to interview candidates. Once a candidate is recommended to be hired, the principal makes a recommendation to the Dean for his approval. This process can easily take 6 or more weeks to complete from the time a resignation is received to when a person can be employed. Gina Burke resigned in late June. There were eight candidates for the 2/3 position invited to interviews that were conducted the first and second week in August. Thus, the new 2nd grade teacher was employed the week prior to school beginning.

The kindergarten interviews also began the first week of August, but no qualified candidate was identified. Eventually, a waiver was requested to hire someone without following the formal process. A qualified candidate was contacted on the Friday evening before school was to begin and search committee members and the principal met with her on Saturday. A job offer was made on Sunday. We were lucky to find such a qualified teacher available at that time.

Regarding the supply list:

At Burriss, each teacher designs her or his class curriculum. We do not have generic class supply lists. Each teacher develops a supply list specific to the curriculum and learning activities in her or his classroom. Changes in classroom assignments are made throughout the summer as administrators review student data and look at classroom and overall groupings as new students are added. In order to assure each student receives the correct classroom supplies list these lists are mailed out, along with teacher class assignments, with the parent newsletter, the Owl Hoots, in late July. In the future, an attempt will be made to have a general class supply list by grade level available at the end of the school year. A separate list with items specific to each teacher will be included with class assignment information sent out in July.

Jay McGee

State and National Recognitions for Burriss

Burriss is a 2007 National Blue Ribbon School of Excellence

Burriss was recognized in U.S. News and World Report as a National Bronze Medal School in 2008 and a National Silver Medal School in 2007, 2009, and 2010.

Burriss was cited as one of Americas Best Schools by Newsweek in June 2010

Burriss was recognized as one of America's Most Challenging Schools in The Washington Post in May 2011.

In August 2010, Burriss was recognized by Governor Mitch Daniels, State Superintendent of Instruction Tony Bennett, and The Indiana Commissioner for Higher Education as a school that had 25% or more of the students in the graduating class of 2009 pass at least one Advanced Placement exam. Only twelve schools in the state achieved this goal. 33% of the Burriss graduates of 2009 achieved this goal, placing Burriss among the top 5 schools in the state for the percent of 2009 graduates passing at least one AP exam.

In August 2011, Burriss was again recognized at a state ceremony for schools that promote Access and Success in AP classes. 37% of Burriss graduates in the class of 2010 scored a 3 or above at least one Advanced Placement exam.

Burriss should be in the top 2 schools in the state in this category for next year based on the number of the members of the class of 2011 that enrolled in AP classes and passed at least one AP exam. 83% of the students in this class took at least one AP exam. It is expected that that many of these students received a 3 or above on the associated AP exam. This is exceptional growth as there were no AP classes offered at Burriss in 2004 - 2005.

The above awards recognize Burriss as one of the top schools in the nation in overall academic achievement and college readiness.

Recently, a Burriss student, Max Chezem, who is a senior this year, earned the highest possible composite score of 36 on the ACT assessment. Among the graduating class of 2010, nearly 1.6 million graduates took the ACT. Of that number, just 588 student earned a score of 36. This places Max in the top one-tenth of one percent of all ACT test takers. The success that Max is experiencing is a result of his excellent preparation in elementary, middle school, and high school at Burriss.

In addition, Burriss typically has a 96% to 100% graduation rate, while the national average graduation rate is about 65%. 98% to 100% of Burriss graduates go on to post-secondary education programs.

Arrival and Dismissal Times

Arrival: Burriss students should not arrive earlier than 7:45 in the mornings unless they are attending a supervised before school activity or planning to have breakfast in the cafeteria. Breakfast is served from 7:30 a.m.-7:55 a.m..

Dismissal: All Burriss students K-12 must leave or be picked up promptly after school unless the student is involved in a supervised after school activity. Students who are found to be unsupervised will be brought to the office and parents will be contacted.

Thank you for your cooperation in providing transportation to and from school.

Attendance and Tardy Policies

Attendance Policy

Students are required to be in attendance every school day. Regular attendance and punctuality are essential for school success. Each student is granted a maximum of ten (10) days he/she may be absent each school year. A parent must verify the absences or the child will be considered truant. There are exempt absences, such as religious observances or serving as a page of the General Assembly. Please see the student handbook at <http://www.bsu.edu/burris> for a complete list of exemptions.

Students exceeding ten (10) absences will be placed on an attendance contract, which may place limits on opportunities available at Burris. Additionally, referral agencies are utilized for working with attendance concerns. An administrator will contact the parent or guardian to inform them of the referral and initial appropriate action. Referral agencies may include, but are not limited to, the Delaware County Prosecutor's Office, Family Services, Juvenile Department, Child Protection Services, Department of Motor Vehicles or other family and social service agencies.

This policy will be strictly enforced this year. It is imperative that you schedule family vacations around the school calendar, as these days will count towards the ten (10) granted absences.

Any student who is experiencing a prolonged medical condition will be required to fill out a Certificate of Incapacity that requires a signed physician's statement explaining the prolonged medical condition.

Tardy Policy

Students who exceed three tardies per semester will have a parent notification letter sent home. After the fifth tardy, middle and high school students will be assigned a closed lunch period for each tardy. When students reach the sixteenth through twentieth tardy, they will be assigned a two-hour detention (one hour closed lunch, one hour after school detention). Detention takes precedence over all school events. Students must serve a detention the day of a game or any other school activity before participation in the game or school activity. After the twentieth tardy, the student will be assigned an in-school suspension for each additional tardy. After two in-school suspensions, the Delaware County Child Protective Services and Delaware County Prosecutor's Office will be notified of the habitually tardy status of the student.

After School Help Sessions for Middle and High School Students

After school help sessions are offered for middle and high schools students. These help sessions are available Monday through Thursday. Specialized help and remediation sessions are being designed for elementary students.

High School Math Help Sessions

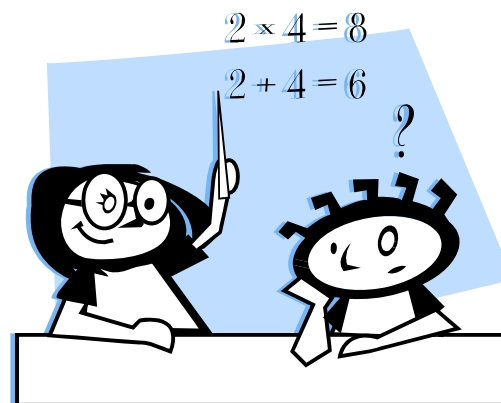
Monday and Wednesday: Mrs. Shepherd, room 225, 3:00 until 4:15

Tuesday and Thursday: Mr. Hinkley, room 223, 3:00 until 4:15

Middle School Math Help Sessions

Monday and Wednesday: Mr. Butler, room 232, 3:00 until 4:15

Tuesday and Thursday: Mrs. Goney, room 242, 3:00 until 4:15



Notes from the Nurse

Influenza season is on its' way and it is NOT too soon to get a flu shot for your child or for you!

Did you know?

In most communities, school-age children are the first age group to get the flu.

The flu is usually spread in respiratory droplets caused by coughing or sneezing.

One out of five Americans get the flu annually.

Symptoms of a cold and the flu are often very similar and it might be difficult to determine what illness your child is experiencing.

Symptoms of the **flu** include:

Fever (usually high), headache, extreme fatigue, dry cough, sore throat and muscle aches. The common cold generally will not produce a high fever and produces more respiratory symptoms such as moist cough, nasal congestion and or runny nose.

If your child is ill, please remember to call in their absence by 8:30 a.m. on the day of the absence. Any absence related to illness that lasts for three consecutive school days requires a note from the doctor for the student's return to classes.



High School Art Department News

A field trip to the Indianapolis Museum of Art has been scheduled for Thursday, Oct. 27. Students in current art classes – Ceramics, AP 2D Design, Introduction to 2D and Printmaking are greatly encouraged to participate. We will be visiting the Lilly Gardens to sketch from observation in the morning and tour the galleries in the afternoon – specifically the European and Asian galleries. We will also view the *Old Master's* printmaking exhibit. Any time remaining students can explore on their own. We will be leaving Burriss by 8:45am and return by 3pm. Students should report to their first hour classes, but will be have permission to meet in the art room at 8:30. Lunch will be available at the museum café or students can pack a lunch. Prices for the café range from \$4.50 pizzas and soups to \$8.50 salads and sandwiches so please plan accordingly. Admission to the museum is free; the cost will be \$10.00 for the bus PLUS lunch money for dining at IMA Cafe. Signed permission forms and bus money should be turned in to Mrs. Stokes by Oct. 24. Checks must be made payable to Burriss Laboratory School. Mrs. Stokes, Mrs. Maugherman and 2 other chaperons to be determined will accompany students.

Please contact Mrs. Stokes if you have any questions. clstokes@bsu.edu

Visit the IMA website at <http://www.imamuseum.org/>

Visit this website for IMA Café menu - <http://www.imamuseum.org/visit/dining>



Fees

Elementary and Middle School fees have been billed for the year. High School fees have been billed for the fall semester only. You should have received a fee listing from Burriss as well as a fees statement from the Bursar's office in September. (Note: if you have an account in collections, the Bursar's office can not mail a statement. However, your fees all still due and must be paid along with all collection amounts). ALL FEES UNPAID ARE NOT PAST DUE. Please note: the Bursar's office does not mail monthly statements. Please remember:

- **Do not send any payments to Burriss Laboratory School. We can NOT accept them.**
- **Checks or money orders must be mailed to: Ball State University, Office of Bursar & Loan Administration, Muncie, IN 47306**
- **All payments must include: payment remittance slip (received from Bursar) or a note indicating the student (s) name and ID number, and amount to apply to each account.**
- **Band instrument rental fees and band elementary course fees were mailed on October 6. Statements will not be mailed from the Bursar's Office. Please send payments as indicated on statements to the Office of Bursar & Loan Administration.**

If you have paid your fees, THANK YOU!

Cafeteria Notice

Students have received their new ID cards. Middle and high school students MUST have these each day when eating a meal in the cafeteria unless they are paying CASH. Elementary students receive these before going to lunch each day.

Parents: We are again having TOO MANY students charging meals. Please make sure that, unless your child is qualified for free lunch, they have cash or funds deposited on their meal account with Ball State University's Dining Services. Parents/Guardians may put funds on their child's account by using a credit card online—<http://www.bsu.edu/dining>

Veteran's Day Program



Burriss will be honoring our nation's veterans on November 11, 2011, at 2:00 p.m. in the auditorium. Burriss students are encouraged to invite family and friends who are military veterans to be guest speakers at this program. Please submit names of guests to Mrs. Mary Gluff by October 31st. We also welcome any veteran or family member who wants to be in the audience.

Spooky Fall Concert

Friday, October 28, 9:00 A.M.

Burriss's annual Spooky Fall Concert

Hear Edgar Allen Poe's famous story *The Pit and the Pendulum*

Scary music!

All grades invited!

See you there – IF YOU DARE!



Grades 4 and 5 News

- MATH CLASSES meet each day at 10 a.m. and are now in full swing.
- SCIENCE CLASSES meet each Tuesday and Thursday afternoon. Ask your child to share his science folder and notebook with you. We encourage each student to take these home on science days and review what happened in that class. New skills, such as basic note taking and organization, should be developing through the year.
- Reading For Fun! Is your child finding books that he/she really enjoys reading? READING OUTSIDE OF THE SCHOOL DAY IS A MUST for continued development of language skills! We appreciate the support you provide by encouraging reading at home!

FYI...you can access the Burris Library Card Catalog by going to www.bsu.edu/burris and clicking on the library link.

- BURRIS LITTLE HOOSIERS REMINDER--*please note that each student pays \$6 membership dues for the school year. Burris Little Hoosiers is a chapter of the Indiana Junior Historical Society and as members of this Chapter, students belong to the Indiana Historical Society. Dues help support our Chapter activities.*
- SWIMMING FUNDRAISING NEWS: This amazingly hard-working and creative group of parents has raised \$1270.62 toward the estimated \$1100 needed to continue swimming second semester. The following break down of earnings from specific fundraisers is reported from Pam Turner:

Chuck E. Cheese \$237.72
 Spring freezer pops \$287.90
 Fall freezer pops \$105
 tee shirts \$450
 Dogs for A Cause \$190

Sincere thanks to each of these parents for much dedicated time! Pam Turner, Julie Calvert, Kizmin Jones, Jess Rogers, Laura Waldron, Tracie Brown, Robin Gibson, Paulette Jones, Heather Kublnick

- OUTDOOR-EDUCATION FUNDRAISER: Many thanks to all who participated in the soft drink sale at the Burris Picnic in August. Your contributions helped to raise funds that will support the 4th/5th grade time at Camp Crosley. We do appreciate all who donated valuable time as well as soft drinks. Thank-you to Dawn Fluhler for continuing this project.
- OLYMPIC DAY was a huge success due to all of the volunteer help from families. Managing the field games and cheering on the Olympians is such an important part of this day!
 We send up the biggest BURRIS CHEER to *Mr. Carr* for coordinating all of the track events and arranging equipment for so many great field games. Many thanks for keeping this special Burris Olympic Day tradition alive!
 We would also like to send a tremendous thank-you to the parents who put together morning snacks and coolers of water.
 Many, many thanks to all who contributed!

From the Guidance Office

Meet Our New Staff

We are happy to introduce to you to the new people in the Counseling Center. This year, Mrs. Flannery and I welcome two masters-level school counseling interns, Kristen Davidson and Alyssa Heggen. Also, our Counseling Center assistant, Samantha Floyd, returns to work with us for a second year.

Kristen Davidson is a second year School Counseling Master's degree student. She obtained her bachelor's degree in education from Manchester College in 2009, followed by a year of teaching elementary aged students in northern Indiana. Miss Davidson is excited to work with students of all ages and is employed at Ball State as a graduate assistant in the Rinker Center for International Programs. In her free time, she enjoys exercising, reading, and talking with friends and family.

Alyssa Heggen is a second year graduate student at Ball State University working on her Master's degree in School Counseling. She attended Indiana University where she earned her bachelor's degree in psychology with minors in sociology and family & human studies. For several years, Miss Heggen worked at Lifeline Youth & Family Services in Fort Wayne, Indiana, working with at-risk adolescents. Outside of school, she enjoys scrapbooking and spending time with her friends and family! Miss Heggen is very excited to work with all the students at Burriss this year!

Please stop by room 112 to meet this year's Counseling Center staff. We are very excited to have a group with such a wealth of different training experiences and professional interests. We're looking forward to another terrific year in the Counseling Center.

Other Counseling Center Announcements

Twenty-first Century Scholars Program -The Twenty-first Century Scholars Program's goal is to ensure that all Indiana families can afford a college education for their children. The program enrolls income-eligible 7th and 8th grade students. **Important note: The program is no longer enrolling 6th grade students.** Students in the program pledge to remain drug, alcohol, and crime free; graduate from an accredited Indiana high school with a grade point average of at least 2.5 on a 4.0 scale; and apply on time for college admission and financial aid. In return, students who keep this pledge receive a tuition award from the state of Indiana. The Scholars program offers more than just tuition. It also provides tutoring, parent activities, college visits and career information designed to encourage students to stay away from drug- and alcohol-related activities and pursue higher education.

Burriss' school code for Twenty-first Century Scholars applications is 1441.

Twenty-first Century Scholars applications for seventh and eighth grade students are available online at www.scholars.in.gov. The deadline is June 30, 2012.

Northwestern University Midwest Academic Talent Search (NUMATS)

In early October, all high ability students in grades 3 through 9 will receive an invitation to participate in the Northwestern University Midwest Academic Talent Search (NUMATS) program. NUMATS offers above-grade-level tests (the EXPLORE, SAT, and ACT) to qualified students in grades 3 through 9 at test centers in our area. Participation in NUMATS

also provides families with information about educational programs through Northwestern's Center for Talent Development.

Please note that this year Burriss will be paying for a portion of the testing fees for all 6th through 8th grade High Ability students. We hope that by lowering the cost, more students will be able to participate in this valuable program.

For more information, please visit www.ctd.northwestern.edu/numats or contact Ashley Flannery in the Counseling Center.

PSAT - The practice SAT (PSAT) will be administered on Wednesday, October 12, 2011, from 8:00 a.m. to 12:00 p.m. in the Student Center Ballroom. Burriss requires all sophomores and juniors to take this test. This program is intended to assist all Indiana high school students to prepare for taking the SAT later in their academic careers. There is no cost to the students. There are informational packets regarding the PSAT in the Counseling Center--each student taking the PSAT should pick these up and share with his or her parents. These packets include the 2011 PSAT/NMSQT Student Bulletin and a practice test.

The PSAT also serves as the qualifying exam for the National Merit Scholarship program. Those juniors who score in the 99th percentile for the state will be named National Merit Semifinalists and invited to apply to be National Merit Finalists during their senior year.

PLAN - The practice ACT (PLAN) will be administered to all sophomores on Tuesday, November 15, 2011, from 8:00 a.m. to 12:00 p.m. in the Student Center Ballroom. In addition to allowing students to practice the questions on the ACT, there is an

From the Guidance Office (continued)

interest inventory portion of the PLAN that will provide career interest information to students and their counselor. There is no fee to students; Burriss will be covering the cost of this test for all students tested. All sophomores are automatically signed up for this test. An announcement will be made at school to let students know when they should come to the Counseling Center to pick up PLAN informational materials. Included with these materials is a Planning Guide for Students and Parents; students are encouraged to share these materials with their parents.

With both the PSAT and PLAN, students will receive practice test scores, their answers, the correct answers, and their original test books about six weeks after taking the tests. Through the individual practice test results, students will know where they excel and where they may need to focus more energy. These are extremely valuable tools when preparing for college entrance exams. Parents, please assist your students in utilizing these helpful tools and by encouraging them to keep these items in a safe place where they will be able to find them again when they are ready to study.

Burriss CEEB code is 152470. This

code is used to identify Burriss Laboratory School on many college applications and test registrations.

Channel 61 - Parents are encouraged to catch either News In a Flash or the Bulletin Board on Channel 61 at least one time a week as Counseling Center announcements change weekly. Hard copies of the weekly announcements are also posted outside of Room 112, for those students and parents unable to watch Channel 61.

Weekly and long term announcements are also posted on the Counseling Center webpage at www.bsu.edu/burriss/guidanceoffice/guidanceoffice/.

Please contact Mrs. Julie Maugherman at 285-2341 or jmaugher@bsu.edu or Mrs. Ashley Flannery at 285-8499 or aeflannery@bsu.edu with any questions or concerns.

Asbestos Management Plan and Pesticide Notification Registry

An Asbestos Management Plan for Burriss Laboratory School (including the athletic facilities used in Ball Gym) is required by the Environmental Protection Agency under existing federal law. This plan is on file with the appropriate agencies. Federal Law requires that parents be notified that the plan is also on file in the office of the Principal and may be viewed by anyone who is interested.

Indiana Code (357 IAC 1-16.8) requires that parents, guardians, and staff be invited to be added to a pesticide notification registry on an annual basis. If you are interested in being added to our notification registry, please contact Mrs. Susan Adair at 285-8065, or stop in the main office.

Schedule of Events—October

- October 17 and 18—NO SCHOOL—Fall Break, office open
- October 14—Mid-term for High School
- October 21—Mid-term for Middle School (semester classes only)



Schedule of Events—November

- November 11—End of 2nd Six Weeks and First Quarter for Middle School
- November 23-25—NO SCHOOL, Thanksgiving Break. Office open on November 23 only.



All calendar events and sporting events can be found on the official
Burris calendar: www.dynacal.com/burris



Marsh Fresh Ideas 4 Education!

Marsh Supermarkets is proud to once again provide a program to earn **FREE** educational, technological and extracurricular equipment for our school. Last school year Burris was able to “purchase”; utility carts, surge protectors, head phones, and office supplies with the points accumulated from our Fresh Ideas cards. Fresh Ideas 4 Education is an easy way to contribute to our school without selling anything.

Marsh is requiring all card holders to re-enroll for the 2011-2012 program to assure your purchases are earning credit for our school. You have two ways you can re-enroll. The first way is to fill out the form at the bottom of this page with your twelve digit **Fresh Idea** card number and return the completed form to your child’s teacher. (You do not need to fill in a name, address or anything else!) You may also enroll yourself by going to www.marsh.net and following the instructions. **Our school code is 29069**. Once you have enrolled your card simply scan your card each time you shop at your local Marsh store to begin earning points for our school.

If you have friends or family members that would like to participate, space has been provided for multiple card numbers. For questions on this program you may contact Susan Adair at 285-8065 or email seadair@bsu.edu.

Thank you for taking the time to do this for our school!

.....
Fresh Ideas 4 Education

Card Number: _____

Card Number: _____

Card Number: _____

*Card numbers are twelve digits long and are located on the back of your card underneath the bar code!



H.O.O.T. Cards

(Helping Out Our Teams)

Fundraising Program

Need a reason to go shopping? Introducing a new way to purchase items from your favorite stores! H.O.O.T. Cards are now available from a wide variety of retailers. You can order cards from local stores each month with the added benefit of earning a percentage of the face value for our Burris Teams.

There are TWO convenient ways to order:

- 1) Complete the order form on the reverse side of the page. Pay by check to: Burris Volleyball Boosters. Turn the check and order in to one of the month's sponsoring team members or to the Main Office to be placed in Mr. Harman's mailbox.
- 2) Order Online at www.shopwithscrip.com. Click on "Family Sign Up" and create an account for your family. Use Enrollment Code: 8BC848833L696. Payments may be made online or submit a check to Burris Volleyball Boosters.

Benefits:

- ☺ No unwanted products
- ☺ Can be used for personal purchases or given as gift cards
- ☺ You get the full value of the card and the teams earn a % back!

October sales profit the Middle School Cheerleading Program!

Examples: A typical family could purchase cards for groceries, gas, dining, or as gifts.

Target	\$25	2%	\$.50
Speedway	\$25	4%	\$1.00
Starbucks	\$10	7%	\$.70
Olive Garden	\$25	9%	\$2.25
Total	\$85		\$4.45

If 100 families were to purchase gift cards, the profit would be \$445 for the team.

Family Order Form

Created: 9/25/2011 11:22:32 PM

Burriss Volleyball Boosters

Welcome to the new H.O.O.T.S (Helping Out Our Teams) Purchasing Program! October orders benefit MS Cheerleaders. Orders due by Thursday, October 20th!

Name	Customer #
Check #	Order Date

Product	%	QTY	Total	Product	%	QTY	Total	Product	%	QTY	Total
Aeropostale \$25.00	7.00%		\$	GameStop \$25.00	3.00%		\$	Papa John's Pizza \$10.00	8.00%		\$
AMC Theatres \$25.00	**12.00%		\$	Gap \$25.00	14.00%		\$	Papa Murphy's Pizza \$10.00	**10.00%		\$
AMC Theatres Single Admit \$9.50	16.00%		\$	Hallmark \$25.00	4.00%		\$	Payless Shoes \$20.00	13.00%		\$
American Eagle Outfitters \$25.00	10.00%		\$	Icing \$10.00	9.00%		\$	Pizza Hut \$10.00	8.00%		\$
Applebee's \$25.00	8.00%		\$	IHOP \$25.00	8.00%		\$	Pottery Barn \$100.00	8.00%		\$
Arby's \$10.00	8.00%		\$	iTunes@ \$15.00	5.00%		\$	Qdoba Mexican Grill \$25.00	7.00%		\$
Baskin Robbins \$2.00	9.00%		\$	iTunes@ \$25.00	5.00%		\$	Quiznos \$10.00	10.00%		\$
Bath & Body Works \$10.00	13.00%		\$	J. Crew \$25.00	13.00%		\$	Red Lobster \$25.00	9.00%		\$
Bath & Body Works \$25.00	13.00%		\$	JCPenney \$25.00	5.00%		\$	Ruby Tuesday \$25.00	8.00%		\$
Bed Bath & Beyond \$25.00	7.00%		\$	Jo-Ann Fabrics \$20.00	6.00%		\$	Sam's Club \$100.00	2.00%		\$
Best Buy \$100.00	3.00%		\$	KFC \$5.00	8.00%		\$	Sam's Club \$25.00	2.00%		\$
Best Buy \$25.00	3.00%		\$	Kmart \$25.00	4.00%		\$	Sears \$25.00	4.00%		\$
Bob Evans \$10.00	10.00%		\$	Kmart \$50.00	4.00%		\$	Shell \$25.00	2.50%		\$
Build-A-Bear Workshop \$25.00	8.00%		\$	Kohl's \$100.00	4.00%		\$	Shell \$50.00	2.50%		\$
Burger King \$10.00	4.00%		\$	Kohl's \$25.00	4.00%		\$	Shoe Carnival \$25.00	5.00%		\$
Carlos O'Kelly's Mexican Cafe \$10.00	9.00%		\$	L.L.Bean \$100.00	**17.00%		\$	Shutterfly \$25.00	9.00%		\$
Children's Place \$25.00	12.00%		\$	Lands' End \$100.00	16.00%		\$	Speedway \$100.00	4.00%		\$
Chili's Grill & Bar \$25.00	11.00%		\$	Little Caesar's Pizza \$20.00	8.00%		\$	Speedway \$25.00	4.00%		\$
Chuck E. Cheese \$10.00	8.00%		\$	Lowe's \$100.00	4.00%		\$	Staples \$25.00	5.00%		\$
Claire's \$10.00	9.00%		\$	Lowe's \$20.00	4.00%		\$	Starbucks \$10.00	7.00%		\$
Cold Stone Creamery \$10.00	8.00%		\$	Marathon \$25.00	3.00%		\$	Starbucks \$25.00	7.00%		\$
Cracker Barrel \$10.00	9.00%		\$	Marriott Hotels & Resorts \$100.00	8.00%		\$	Subway \$10.00	3.00%		\$
Cracker Barrel \$25.00	9.00%		\$	Maurices \$20.00	7.00%		\$	T.J. Maxx \$25.00	7.00%		\$
CVS/pharmacy \$25.00	6.00%		\$	MC Sports \$25.00	6.00%		\$	Taco Bell (IL, IN, MO and TX only) \$10.00	5.00%		\$
Dick's Sporting Goods \$25.00	8.00%		\$	Meijer (not AK, HI, MI) \$100.00	3.00%		\$	Target \$100.00	2.00%		\$
Domino's Pizza \$10.00	8.00%		\$	Meijer (not AK, HI, MI) \$25.00	3.00%		\$	Target \$25.00	2.00%		\$
Dunham's Sports \$25.00	8.00%		\$	Menards \$25.00	3.00%		\$	Texas Roadhouse \$25.00	8.00%		\$
Dunkin' Donuts \$10.00	4.00%		\$	Noodle's & Company \$10.00	8.00%		\$	TGI Friday's \$25.00	9.00%		\$
Elder-Beerman \$25.00	8.00%		\$	Old Navy \$25.00	14.00%		\$	Toys-R-Us \$20.00	1.50%		\$
Family Video \$10.00	12.00%		\$	Olive Garden \$25.00	9.00%		\$	Walgreens \$25.00	6.00%		\$
Foot Locker \$25.00	9.00%		\$	Outback Steakhouse \$25.00	8.00%		\$	Walmart \$100.00	2.00%		\$
				Panera Bread \$10.00	9.00%		\$	Walmart \$25.00	2.00%		\$
				Panera Bread \$25.00	9.00%		\$	Wendy's \$10.00	4.00%		\$

Make Checks Payable To: Burriss Volleyball Boosters

Total Due All Columns:

--

****Limited time bonus offer. Participating retailers and products are subject to change without notice.**

Our Specials Today Are . . .

MONDAY	TUESDAY	WEDNESDAY	THURSDAY	FRIDAY
<p>BREAKFAST 3 Canadian Bacon Tropical Fruit Cranberry Muffin</p> <p>LUNCH Grilled Salmon/Beef Chzburger on Wild Rice Six Cheese Ravioli w/Marinara Sauce Pot. Wedges/Calif. Blend Veggies/Chzy Bread Orange Juice/Red Apple Milk</p>	<p>BREAKFAST 4 Sausage Link Red Grapes French Toast Sticks</p> <p>LUNCH Milwaukee-Style Cod Strips/Hot Dog w/Bun Cheese Manicotti w/Alfredo Sauce Waffle Fries/Capri Blend Veggies Orange Juice/Red Grape Cup Milk</p>	<p>BREAKFAST 5 Ham Pears Waffle Sticks</p> <p>LUNCH Lime Marinated Chicken Breast/Beef Pot Roast Fettuccine w/Pesto Cream Sauce Herb Roasted Potatoes/Broccoli Florets Grape Juice/Pears Milk</p>	<p>BREAKFAST 6 Whole-Grain Pancake Pineapple Tidbits Blueberry Muffin</p> <p>LUNCH Beef Tacos/Pasta w/Italian Sausage & Sauce Spanish Rice/Refried Beans Chuckwagon Corn/Corn Muffin Orange Juice/Pineapple Tidbits Milk</p>	<p>BREAKFAST 7 Sausage Patty Peaches French Toast</p> <p>LUNCH Whole Grain Saus., Pepperoni, or Chz Pizza Boca Burger/Cheese Tortellini w/Sauce Smiley Face Potatoes/Italian Blend Veggies Apple Juice/Fruit Cocktail Milk</p>
<p>BREAKFAST 10 Sausage Links Blueberry Muffin Whole-Grain Pancake</p> <p>LUNCH BBQ Chicken Breast Penne Pasta w/Italian Sausage & Sauce Broccoli & Rice Cass./Gr. Beans/Breadsticks Grape Juice/White Grape Cup Milk</p>	<p>BREAKFAST 11 Canadian Bacon Sliced Pears Waffle Sticks</p> <p>LUNCH Chicken Patty Sandwich Broccoli & Cheese Soup/Mac & Cheese Baked Potato Steamed Baby Carrots/Broccoli Spears Orange Juice/Pears Milk</p>	<p>BREAKFAST 12 Sausage Link Pineapple Tidbits French Toast</p> <p>LUNCH Baked Parmesan Cod/BBQ Meatloaf Cheese Manicotti w/Alfredo Sauce Mashed Potatoes w/Beef Gravy Green Beans w/Toasted Almonds Apple Juice/Mixed Fruit Cup Milk</p>	<p>BREAKFAST 13 Waffles Tropical Fruit Lemon Poppyseed Muffin</p> <p>LUNCH BBQ Chicken Breast/Sloppy Joe Fettuccine w/Sundried Tomato Alfredo Sauce Tater Tots/Roasted Asparagus Grape Juice/Mandarin Oranges Milk</p>	<p>BREAKFAST 14 Canadian Bacon Fresh Strawberries French Toast Sticks</p> <p>LUNCH Whole Grain Saus., Pepperoni, or Chz Pizza Baked Spaghetti/Chipotle Black Bean Burger California Blend Veggies/Cheesy Garlic Toast Orange Juice/Pears Milk</p>
<p>17</p> 	<p>18</p> 	<p>BREAKFAST 19 Whole-Grain Pancakes Mandarin Oranges Chocolate Chip Muffin</p> <p>LUNCH Fire Roasted Peppercorn Tilapia/Meatloaf Cheese Tortellini w/Italian Sausage & Sauce Mashed Potatoes w/Beef Gravy/Tuscan Veggies Grape Juice/Mandarin Oranges Milk</p>	<p>BREAKFAST 20 Sausage Patty Pineapple Tidbits Cranberry Muffin</p> <p>LUNCH Philly Cheesesteak/Penne w/Meatballs Creamy Beef & Mushrooms w/Noodles Pacific Blend Vegetables Apple Juice/Pineapple Tidbits Milk</p>	<p>BREAKFAST 21 Corn Muffin Pears French Toast Sticks</p> <p>LUNCH Whole Grain Saus., Pepperoni, or Chz Pizza Boca Burger/Six Cheese Tortellini w/Sauce Smiley Face Potatoes/Mixed Veggie Blend Orange Juice/White Grapes Milk</p>
<p>BREAKFAST 24 Ham Corn Muffin French Toast Sticks</p> <p>LUNCH Chicken Tacos/Bean Burrito Fettuccine w/Alfredo Sauce Spanish Rice/Refried Beans/Broccoli Buds Apple Juice/Sliced Peaches Milk</p>	<p>BREAKFAST 25 Sausage Patty Pineapple Tidbits Waffle Sticks</p> <p>LUNCH Cod Strips/Meatball Sub Penne w/Spaghetti Sauce Italian Blend Veggies/Cheesy Garlic Toast Orange Juice/Pears Milk</p>	<p>BREAKFAST 26 Canadian Bacon Mandarin Oranges Whole-Grain Pancake</p> <p>LUNCH Salisbury Steak/Baked Chicken Tenders Cheese Tortellini w/Alfredo Sauce Mashed Potatoes w/Beef Gravy Calif. Blend Veggies/Breadsticks Grape Juice/Tropical Fruit Milk</p>	<p>BREAKFAST 27 Sausage Link French Toast Sticks Chocolate Chip Muffin</p> <p>LUNCH Teriyaki Chicken Breast/Hot Ham & Chz Sand. Spaghetti w/Italian Sausage & Sauce Broccoli Spears/Chz Sauce/White Rice Waffle Fries/Breadsticks Apple Juice/Fruit Cocktail Milk</p>	<p>BREAKFAST 28 Canadian Bacon Waffle Blueberry Muffin</p> <p>LUNCH Whole Grain Saus., Pepperoni, or Chz Pizza Chipotle Black Bean Burger/Mac & Cheese Smiley Face Potatoes/Winter Blend Veggies Grape Juice/Grapefruit Segments Milk</p>
<p>BREAKFAST 31 Canadian Bacon Tropical Fruit Cranberry Muffin</p> <p>LUNCH Grilled Salmon/Beef Chzburger on Wild Rice Six Cheese Ravioli w/Marinara Sauce Pot. Wedges/Calif. Blend Veggies/Chzy Bread Orange Juice/Red Apple Milk</p>				



For You Each Day . . .



The following items will be offered on a daily basis
in addition to the rotating menu schedule on the opposite side of this page.

STANDARD BREAKFAST ITEMS

Orange Juice
Assorted Cereals
Bagels

Scrambled Eggs
Wheat Toast
Hardcooked Eggs

Potato Rounds
English Muffins

STANDARD LUNCH ITEMS

PB & J Sandwiches
Turkey & Cheese Sandwiches
Salad Bar

Applesauce
Cottage Cheese

Hardcooked Eggs
Peanut Butter Cup

STANDARD SNACK ITEMS

Apples
Bananas
Grapefruit
Oranges

Yogurt
Assorted Chips
Pretzels

Otis Spunkmeyer Sugar Cookies
String Cheese
Granola







BEVERAGES

Milk
Soy Milk

Snapple
Gatorade

Aquafina Water

Our Specials Today Are . . .

MONDAY	TUESDAY	WEDNESDAY	THURSDAY	FRIDAY
	<p>BREAKFAST 1 French Toast Sticks Red Grapes Sausage Links</p> <p>LUNCH Milwaukee-Style Cod Strips/Hot Dog w/Bun Cheese Manicotti w/Alfredo Sauce Waffle Fries/Capri Blend Veggies Orange Juice/Red Grape Cup Milk</p>	<p>BREAKFAST 2 Ham Waffle Sticks</p> <p>LUNCH Lime-Marinated Chicken Breast/Beef Pot Roast Fettuccine w/Pesto Cream Sauce Herb Roasted Potatoes/Broccoli Florets Grape Juice/Pears Milk</p>	<p>BREAKFAST 3 Whole-Grain Pancake Pineapple Tidbits Blueberry Muffin</p> <p>LUNCH Beef Tacos/Pasta w/Italian Sausage & Sauce Spanish Rice/Refried Beans Chuckwagon Corn/Corn Muffin Orange Juice/Pineapple Tidbits Milk</p>	<p>BREAKFAST 4 Sausage Patty French Toast</p> <p>LUNCH Whole-Grain Saus., Pepperoni, or Chz. Pizza Boca Burger/Cheese Tortellini w/Sauce Smiley Face Potatoes/Italian Blend Veggies Apple Juice/Fruit Cocktail Milk</p>
<p>BREAKFAST 7 Sausage Link Blueberry Muffin Whole-Grain Pancake</p> <p>LUNCH BBQ Chix Brst/Penne Pasta w/Saus. & Sauce Broccoli & Rice Cass./Gr. Beans/Breadsticks Grape Juice/White Grape Cup Milk</p>	<p>BREAKFAST 8 Canadian Bacon Sliced Pears Waffle Sticks</p> <p>LUNCH Chicken Patty Sandwich/Mac & Cheese Broccoli & Cheese Soup/Baked Potato Baby Carrots/Broccoli Spears Orange Juice/Pears Milk</p>	<p>BREAKFAST 9 Sausage Link Pineapple Tidbits French Toast</p> <p>LUNCH Baked Parmesan Cod/BBQ Meatloaf Cheese Manicotti w/Alfredo Sauce Mashed Potatoes w/Beef Gravy Green Beans w/Toasted Almonds Apple Juice/Mixed Fruit Cup Milk</p>	<p>BREAKFAST 10 Waffles Tropical Fruit Lemon Poppyseed Muffin</p> <p>LUNCH BBQ Chicken Breast/Sloppy Joe Fettuccine w/Sundried Tomato Alfredo Sauce Tater Tots/Roasted Asparagus Grape Juice/Mandarin Oranges Milk</p>	<p>BREAKFAST 11 Canadian Bacon Fresh Strawberries French Toast Sticks</p> <p>LUNCH Whole-Grain Saus., Pepperoni, or Chz Pizza Baked Spaghetti/Chipotle Black Bean Burger Calif. Blend Veggies/Cheesy Garlic Toast Orange Juice/Sliced Pears Milk</p>
<p>BREAKFAST 14 Sausage Links Strawberries Cinnamon Raisin Biscuit</p> <p>LUNCH BBQ Rib Sandwich/Alfredo Vegetable Lasagna Spaghetti w/Marinara Sauce Roasted Red Potatoes/Sugar Snap Peas Orange Juice/Applesauce Cup Milk</p>	<p>BREAKFAST 15 Ham Sliced Peaches French Toast</p> <p>LUNCH Jerk Chicken Breast w/Mango Salsa/Corn Dog Cavattapi Pasta w/Pesto Cream Sauce White Rice/Cauliflower Buds/Breadsticks Grape Juice/Pineapple Tidbits Milk</p>	<p>BREAKFAST 16 Whole-Grain Pancake Mandarin Oranges Chocolate Chip Muffin</p> <p>LUNCH Fire-Roasted Peppercorn Tilapia/Meatloaf Cheese Tortellini w/Italian Sausage & Sauce Mashed Potatoes w/Bf Gravy/Tuscan Veggies Grape Juice/Mandarin Oranges Milk</p>	<p>BREAKFAST 17 Sausage Patty Pineapple Tidbits Cranberry Muffin</p> <p>LUNCH Philly Cheesesteak/Penne w/Meatballs & Sauce Creamy Beef & Mushrooms w/Noodles Pacific Blend Veggies Apple Juice/Pineapple Tidbits Milk</p>	<p>BREAKFAST 18 Corn Muffin French Toast Sticks</p> <p>LUNCH Whole-Grain Saus., Pepperoni., or Chz Pizza Boca Burger/Six Chz Ravioli w/Sauce Smiley Face Potatoes/Mixed Veggie Blend Orange Juice/White Grapes Milk</p>
<p>BREAKFAST 21 Ham Corn Muffin French Toast</p> <p>LUNCH Chicken Tacos/Bean Burrito Fettuccine w/Alfredo Sauce Spanish Rice/Refried Beans Steamed Broccoli Buds Apple Juice/Sliced Peaches Milk</p>	<p>BREAKFAST 22 Sausage Patty Pineapple Tidbits Waffle Sticks</p> <p>LUNCH Milwaukee-Style Cod Strips/Meatball Sub Penne w/Meatballs & Sauce Italian Blend Veggies/Cheesy Garlic Toast Orange Juice/Pears Milk</p>	<p>23</p>  <p>THANKSGIVING BREAK</p>	<p>24</p>  <p>THANKSGIVING BREAK</p>	<p>25</p>  <p>THANKSGIVING BREAK</p>
<p>BREAKFAST 28 Canadian Bacon Tropical Fruit Cranberry Muffin</p> <p>LUNCH Grilled Salmon/Beef Chzburger on Wild Rice Six Cheese Ravioli w/Marinara Sauce Potato Wedges/Calif. Blend Veggies Cheesy Garlic Toast Orange Juice/Red Apple Milk</p>	<p>BREAKFAST 29 Sausage Link Red Grapes French Toast Sticks</p> <p>LUNCH Milwaukee-Style Cod Strips/Hot Dog w/Bun Cheese Manicotti w/Alfredo Sauce Waffle Fries/Capri Blend Veggies Orange Juice/Red Grape Cup Milk</p>	<p>BREAKFAST 30 Ham Pears Waffle Sticks</p> <p>LUNCH Lime- Marinated Chicken Breast/Pot Roast Fettuccine w/Pesto Cream Sauce Herb Roasted Potatoes/Broccoli Florets Grape Juice/Pears Milk</p>		



For You Each Day . . .



The following items will be offered on a daily basis
in addition to the rotating menu schedule on the opposite side of this page.

BREAKFAST

Orange Juice
Assorted Cereals
Bagels

Scrambled Eggs
Wheat Toast
Hardcooked Eggs

Potato Rounds
English Muffins

LUNCH

PB & J Sandwiches
Turkey & Cheese Sandwiches
Salad Bar

Applesauce
Cottage Cheese

Hardcooked Eggs
Peanut Butter Cup

SNACKS

Apples
Bananas
Grapefruit
Oranges

Yogurt
Assorted Chips
Pretzels

Otis Spunkmeyer Sugar Cookies
String Cheese
Granola

BEVERAGES

Milk
Soy Milk

Snapple
Gatorade

Aquafina Water