

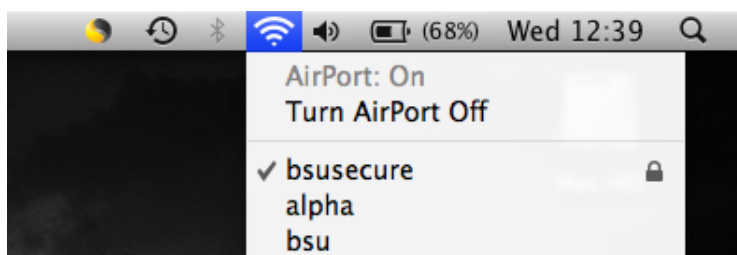
# Connecting to **bsusecure** using Mac OS X

---

1. Click on the Airport icon



2. Select **bsusecure**



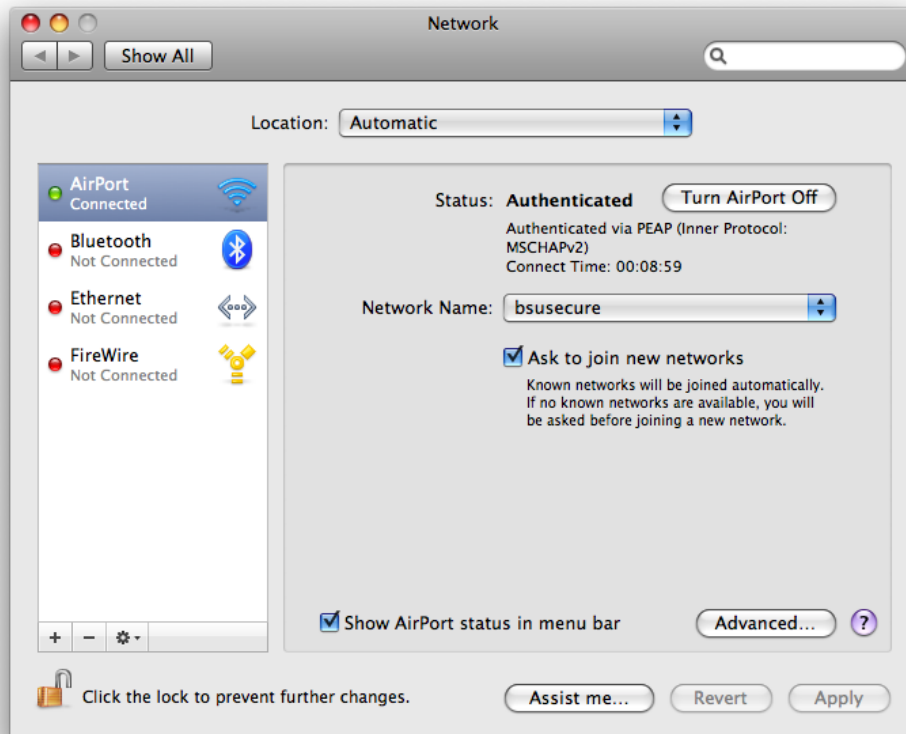
3. Enter your BSU username and password



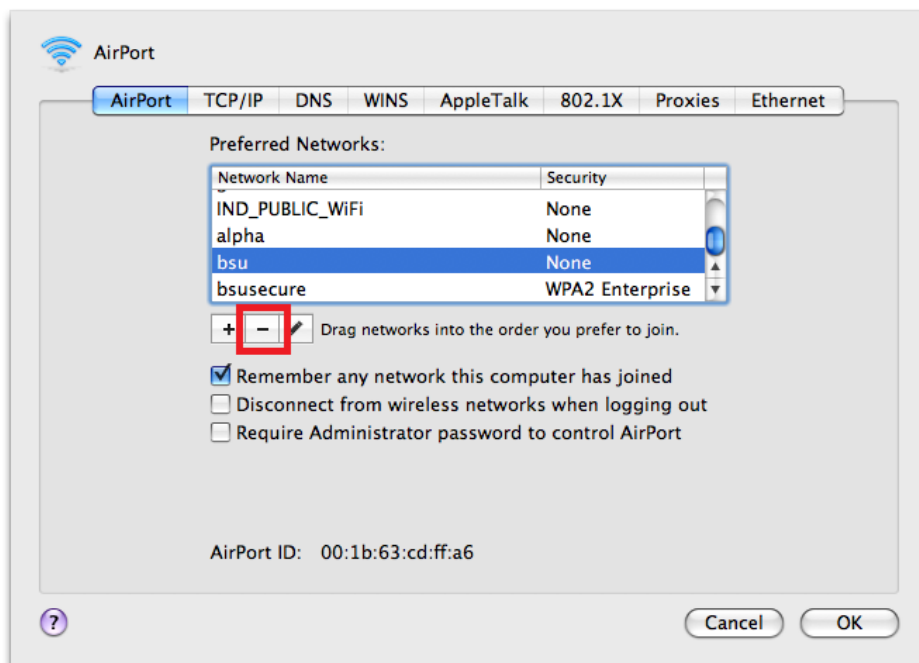
4. After you've successfully logged in, click the Airport icon and select **Open Network Preferences**



5. Click **Advanced...** in the bottom right corner of the window



6. If **bsu** or **bsuguest** exist in the list of preferred networks, delete them by selecting **bsu** or **bsuguest** and hitting the delete button in the bottom left corner of the window.



7. Click **OK**
8. Click **Apply** to save the changes