

Letter from the Chair

Another year come and gone. As noted throughout this edition, we are celebrating the careers of two long-time CPSY folks this semester. Tammy Montgomery's retirement celebration was at the beginning of March; some surprise attendees from her past were there along with many current students and faculty. She will be missed, but the rest of us will have an easier time finding chocolate in Muncie!

David Dixon's retirement celebration is at the beginning of next month; he leaves a strong mark on the Department and on countless MA and doctoral students whom he has taught, clinically supervised and/or mentored their research. Information about his impending celebration is located elsewhere in this document.

By the time you get the chance to read this, the International Counseling Psychology Conference in Chicago will have come and gone. We are excited to be one of the co-sponsors of the conference. Dr. Gerstein has been quietly going mad; between conference work, preparing his own presentations for the conference, keeping up with his TCP position on the editorial board, and trying to run a pesky little doctoral program it seems that breathing is optional.

Speaking of the MA and doctoral programs (I was speaking of them, sort of!), we interviewed an excellent crop of students this year. It gets harder and harder to select a class; the candidates are stronger every single year. It is an embarrassment of riches when it comes to selection!

On a sadder note, I again must comment on a campus shooting. Our sympathies go out to our colleagues at Northern Illinois University, the latest targets (at this writing) of an apparently senseless campus shooting. They are, by no means, the only sites being selected by distraught youth and adults (today it was a fatal shooting by a lone gunman at a Wendy's Restaurant in Florida). Last month, a high school was the scene of one shooting, while a middle school was the scene of another. People with guns, angry and desperate, with a need to harm someone else and/or themselves in the process. As counselors, social psychologists and counseling psychologists, we can use our skills to not only study the phenomenon but to also suggest healthy ways to prevent the escalation. As these deaths get closer and closer to home; we can no longer think it doesn't affect us or could never happen here. It IS happening here, right now, and I challenge you to develop some creative ways to touch your little piece of the world in a way to make it better.

Dr. Sharon Bowman

SPECIAL POINTS OF INTEREST

- ◆ Recent publications and presentations (p. 6-7)
- ◆ Academic Calendar (p. 12)
- ◆ Upcoming Conferences and Workshops (p. 13)
- ◆ Important information for graduating Master's Students (p. 14)



INSIDE THIS ISSUE:

<i>News from the Comm. and MH Programs</i>	2
<i>Interview with Dr. David Dixon</i>	4
<i>News from the School Counseling Program</i>	5
<i>Interview with Tammy</i>	8
<i>News from the Rehabilitation Program</i>	9
<i>Alumni & Current Student News</i>	11

News from the Community and Mental Health Counseling Programs

Spring Admissions and Orientation

As I write this we are finishing up the admissions process for the February admissions deadline. We have an outstanding pool of applicants and are very excited to welcome the new class of future community and mental health counselors for fall, 2008.

Spring Orientation for the new students will be held at the Atrium on Saturday, March 29 starting at 12pm. We will need current master's students to attend the orientation and meet with the incoming master's students to tell them about our program from the students' perspective. Please contact Rebecca or Bjorg if you are interested in attending. Their emails are cpsy@bsu.edu and cpsygrad@bsu.edu.

Internships

It is also an exciting time of year for students who will soon be making decisions about where they will be interning beginning this summer or fall. Our current master's students are completing their internships at a variety of excellent sites including the Ball State Counseling Center, Meridian Services, the Youth Opportunities Center, Anderson University Counseling Center, the Union Chapel Counseling Center, the Delaware County Jail, Specialized Alternatives for Family and Youth, Park Center, East 91st Street Christian Church, and Family Services Society.

Content Exam

The content exam was scheduled for March 19. The next administration will be during first summer session. Students in the community and mental health tracks must pass the exam before graduation. You may take the exam once you have completed at least 30 semester hours of coursework in the program.

Conferences

The American Counseling Association (ACA) Annual Convention was March 26-30 in Honolulu, Hawaii. Visit the ACA website: www.counseling.org/Students for helpful information for counseling students or to become a member.

The International Counseling Psychology Conference was held in Chicago, March 6-9. Many of our students and faculty made presentations at this conference. The website for the conference is: <http://www.internationalcounselingpsychologyconference.org/>

The Indiana Counseling Association (ICA) Annual Conference will be held in Indianapolis at the Keystone Sheraton Hotel, April 20-21. For more information, or to become a student member of ICA, visit their web site at <http://www.indianacounseling.org>. You may also wish to join the Indiana Mental Health Counselors Association Division of the ICA. It is a good way to network with other counselors.

The call for proposals for the 2008 Great Lakes Counseling Psychology Conference is now available on this site: <http://www.wmich.edu/coe/cecp/greatlakes/index.htm>. The deadline for proposals was March 24. The conference is being hosted by Western Michigan University, but it will take place at the Grand Rapids campus.

News from the Community and Mental Health Program, Cont'd

Graduates

I always enjoy hearing from our graduates. I recently heard from John Anderson, MA, LMHC who graduated from the master's mental health track in 2005. He has recently authored a parenting book: *The Empowered Parent: How to Parent Without Frustration, Anger and Guilt* (ISBN: 1-60441-187-2) published by PublishAmerica. I also heard from Kristy McNamee (MA '00) who received Licensure as a Mental Health Counselor in 2002 and was working at St. Francis Hospital in Indianapolis as an Outpatient Therapist for children, adolescents, and families for five years. She is taking some time off in order to stay home with her three children. And I heard from Peter Wiethe, who received his masters' from our department in 2001. He is a Licensed Mental Health Counselor providing individual, marital, premarital, and group counseling at Family Counseling Associates in Indianapolis. Thanks to all of you for keeping in touch!

Please email Dr. Perrone at kperrone@bsu.edu to let me know how you are doing in your careers and lives. Also, we will be sending out a survey to our graduates and their employers for our CACREP accreditation, so we ask you to please complete it when you receive it in the mail.

Many thanks and best wishes to all of you,
- Kristin Perrone



Dr. David Dixon's Retirement Celebration

After 21 years, David has decided it is time to leave Ball State University and pursue the pleasures of retirement. He and Felicia (who is also retiring) are looking forward to spending even more time with their beautiful grandchildren, their daughters and sons-in-law, and traveling.

Please join us on campus to celebrate David's long and storied career on Saturday April 5, 2008. We have scheduled a lunch in The Studio room in the Arts and Journalism Building (AJ), next door to Teachers College, from noon to 1:30 p.m. The meal is \$15, payable in advance, please. We will take cash or a

check (payable to BSU). If you want to mail it, please send it in care of Mary Graham-Meadows, Dept. of Counseling Psychology and Guidance Services, Ball State University, Muncie, IN 47306.

From 2 to 4 p.m., one of David's former advisees at the University of Nebraska, Dr. Puncky Heppner, will be giving a presentation in David's honor. We are also planning a panel discussion with some of his former BSU advisees. The presentation will be in AJ 175. We hope you can attend both the lunch and the presentation, but you are welcome to just attend the presentation.

Interview with Dr. David N. Dixon

Why did you decide to become a professor at Ball State?

I guess that the point in time when I probably committed myself to an academic career was during the first year of my doctoral program at the University of Minnesota. I was attracted to a university setting and when I was looking for a career, one of my professors, Lyle Schmidt, suggested that graduate education provided a chance to work with students. My first faculty position was at the University of British Columbia, where I was a faculty member for two years, then I spent fourteen years at the University of Nebraska, and this is my twenty-first year at Ball State. I went through the ranks and the tenure process at Nebraska so I became a full professor there. When I was looking to leave the University of Nebraska and had started to look at some other positions I saw that Ball State had the position of a Department Chair available. To move as a full professor at that time, it was common to move to an administrative role, so when I came here I was the chair of the department for nine years. My wife, Felicia, and I were also closer to our family here and as our kids were getting older, we wanted them to be closer to their grandparents. In addition, Ball State has a lot of resources and I felt that I could help build a really strong program here. At that time, the doctoral program had only received a short-term accreditation, so in the first year I was here we went through an APA site visit and a CACREP site visit. Both of them were successful at levels for the maximum time period, so we did a lot of work that first year, a lot of which has stayed in place.

How has the department changed since you started working here?

Well, I think there was a real split in people's opinions regarding what direction the department was going to go. We had a number of people whose history as professors did not include research and we had some newer faculty members who were committed to research. I think that now we are all committed to the scientist-practitioner model at the doctoral level and in our own personal careers we are all active in research. That has been a major change and I do not think the split is there any longer. We have also changed in terms of demographics, as we have more women faculty members now than we had then. In terms of overall demographics we also have more female graduate students, or fewer male graduate students, than we had before. I think that parallels what has occurred in the whole profession, with more women graduating from doctoral programs. Finally, we are now also more involved in professional organizations, especially Division 17 within the APA.

What developments would you like to see in the department in the near future?

I would like the department to continue focusing on training in a number of different areas, such as teaching, research, and clinical practice, and to continue preparing psychologists to do a good job wherever they find themselves, whether in academic, clinical, or administrative settings. I also hope that we will continue to have a strong master's program. We have always put a lot of energy into the training of our master's students and I think that is something we need to do. My hope is that it continues to be a face-to-face interactive program as opposed to just corresponding online. I think that universities in general are changing, with faculty being on campus less, not that faculty ever worked from 8-5, five days a week, but I think it is important to be in your office on campus and be available to people.

What are some of your plans after you retire?

Well, I think one of the nice parts is that things can be done in a very spontaneous manner as opposed to planning them. Felicia and I have done a lot of traveling and I hope we will be able to continue that. We also have a property in Ohio, 120 acres, and we want to spend some time there. We have two grandchildren and one more on the way and we are enjoying our role as grandparents just as we enjoyed our role as parents. Another thing that we will be able to do spontaneously is that when we get a cold week we will just book a trip where it is warmer. So I anticipate that we will be able to get away from some of the winter weather. Our faith has always been an important part of our lives and I anticipate that we will travel some places on missions. As an example, one trip that we have put off for some time is to visit our friends in Brazil and we also hope to go back to South Africa to finish up some research there.

News from the School Counseling Program, by Dr. Alexander

ISCA Fall Conference

This year's Indiana School Counselor Association's fall conference was a blast!!!! I have to thank school counseling student Leah Hooper for her technology skills in helping to make this conference a success; thanks also to doctoral student Elizabeth Sellers for helping to keep me organized during the months leading up to this event. We had approximately 720 attendees at the conference; ISCA is seeing record membership in the organization. Our keynote speaker was Stedman Graham, a graduate of our counseling program; he did an incredible job encouraging those in attendance to see themselves as leaders in their school. Presently, I am working with Mr. Graham on developing a series of leadership lectures for school counselors here in the state. I've included a photo of Mr. Graham and some of our students who attended the ISCA Fall Conference.



Dr. Alexander and School Counseling students with Stedman Graham at the ISCA Fall Conference

School Counselor of the Year Award

Mindy Turner, M.A. ('04), a graduate from the school counseling program now living in Glendale, Arizona, received the Elementary School Counselor of the Year Award. Mindy is a counselor at Sunset Ridge Elementary School. In an interview with the Glendale Star Mindy said that her job is concentrated in four areas:

- Classroom guidance, which is primarily about prevention
- Keeping the school environment a "Peaceful Place"
- Violence prevention
- Substance abuse prevention and bullying prevention

Mindy also said, "As a school counselor, I focus on how students can be successful learners." Congratulations to Mindy Turner!

For the full story visit: <http://www.glendalestar.com/articles/2008/02/28/news/news06.txt>

News from the School Counseling Program, cont'd

Visit from School Personnel and Secondary Students from St. Lucia

You may recall from last semester's CPSY Times that we were able to conduct a "Help Increase the Peace Program (HIPP-I) in St. Lucia. Students from the Masters programs in Counseling as well as students from Burriss Laboratory School traveled to St. Lucia for 3 weeks and introduced the program in four secondary schools on the Island. I am happy to announce seven students, one teacher and one school counselor from St. Lucia will be visiting Ball State this May. Ms. Patty Buchanan from Burriss and I committed to supporting four students who do not have the resources to pay for this trip. So we are asking for your help to fund four secondary students and one school counselor to visit our beautiful campus and our department, and enjoy all that Indiana has to offer. Ms. Buchanan has prepared a wonderful itinerary for our visitors, and several Muncie families have already volunteered to host our guests. We still need funds to help cover the flight from St. Lucia, which will be the first trip to the U.S. for several students. Please help us with a donation; you may send checks payable to "Burriss May Term" Burriss Laboratory School, 2000 University, Muncie, IN 47307 Att. Ms. Buchanan. We look forward to your support.

Recent Publications

- Bishop, M., Frain, M., & Tschopp, M. K. (in press). Self-management and perceived control in Multiple Sclerosis. *Rehabilitation Counseling Bulletin*.
- Frain, M., Berven, N. L., Chan, F., & Tschopp, M. K. (in press). Family resiliency, uncertainty, optimism, and the quality of life of individuals with HIV/AIDS. *Rehabilitation Counseling Bulletin*.
- Gerstein, L. H., & Ægisdóttir, S. (2007). Training international social change agents: Transcending a U.S. counseling paradigm. *Counselor Education and Supervision*, 47, 123-139.
- Gorbett, K., & Kruczek, T. (2008). Family factors predicting social self-esteem in young adults. *The Family Journal*, 16(1), 58-65.
- Nicholas, D. R., Ægisdóttir, S., Kruczek, T. (2007). Cultural and family issues. In M. J. Fisch & A. W. Burton, *Cancer Pain Management* (Chapter 12, pp. 163-175). NY, NY: McGraw-Hill.
- Perrone, K. M., Perrone, P. A., Jackson, Z. V., Wright, S. L., & Ksiazak, T. M. (In Press). Perfectionism, achievement of potential, and attributions of success among gifted adults. *Advanced Development Journal: A Journal on Adult Giftedness*.
- Spengler, P. M., White, M. J., Ægisdóttir, S., Maugherman, A. S., Anderson, L. A., Cook, R. S. et al. (in press). The meta-analysis of clinical judgment project: Effects of experience on judgment accuracy. *The Counseling Psychologist*.
- Wright, S. L., & Perrone, K. M. (in press). The impact of attachment on career efficacy: A review of the literature and proposed theoretical framework to guide future research. *Journal of Career Development*.

Recent Publications, cont'd

- Ægisdóttir, S. (2006). Psychology and psychological services in Iceland. *Newsletter: Division of Counseling Psychology of the International Association of Applied Psychology*, 3(3), 9-13.
- Ægisdóttir, S. (2007). Research on Icelanders' psychological help seeking patterns. *Psychology Reporter*, 18(5), 10-11.
- Ægisdóttir, S., Gerstein, L. H., & Bartee, J. (In Press). Translation and adaptation of psychological tests. In F. Leong et al., *Encyclopedia of Counseling, Volume One: Changes and Challenges for Counseling in the 21st Century*. CA: Sage.
- Ægisdóttir, S., Gerstein, L. H., & Cinarbas, D. C. (2008). Methodological issues in cross-cultural counseling research: Equivalence, bias and translations. *The Counseling Psychologist*, 36, 188-219.

Recent Presentations

- Choi, S. I., & Ægisdóttir, S. (2007). *Korean college students' attitudes and beliefs about psychological services*. A poster presented at the Annual Convention of the American Psychological Association, San Francisco, CA.
- Einarsdóttir, S. & Ægisdóttir, S. (2007). *Icelandic version of the Beliefs About Psychological Services Scale*. A poster presented at the Annual Convention of the American Psychological Association, San Francisco, CA.
- Nicolas, D. R., Stern, M., Borges, N., & Maltzman, S. (March, 2008). *Defining unique competencies for counseling health psychology*. Working Group at the International Counseling Psychology Conference, Chicago, IL.
- Perrone, K. M., Ksiazak, T. M., Wright, S. L., & Jackson, Z. V. (August, 2007). *The role of gender in self-perceptions of abilities*. Paper presented at the American Psychological Association Conference, San Francisco, CA.
- Perrone, K. M., & Marmarosh, C. L. (August, 2007). *The importance of attachment in psychotherapy and in life*. Paper presented at the American Psychological Association Conference, San Francisco, CA .
- Spengler, P. M., White, M. J., & Ægisdóttir, S. (2007). *Experience and clinical judgment accuracy: A final meta-analysis*. A poster presented at the Annual Convention of the American Psychological Association, San Francisco, CA.
- Ægisdóttir, S., & Einarsdóttir, S. (2007). *A collaboration across the Atlantic: USA and Iceland*. A Symposium presentation (Collaboration in a Flat World) at the Annual Convention of the American Psychological Association, San Francisco, CA.
- Ægisdóttir, S., & Gerstein, L. H. (2007). *Methodological considerations in cross-cultural research*. Symposium presentation (Challenges and Opportunities of Cross-Cultural Research and Practice) at the Annual Convention of the American Psychological Association, San Francisco, CA.
- Ægisdóttir, S., & Chen, H. Y. (2007). *International students' coping strategies, adjustment, and help seeking attitudes*. A Poster presented at the Annual Great Lakes Regional Conference of Counseling Psychology, Akron, OH.

Interview with Tammy Montgomery

What led you to become the clinic coordinator at CPSY?

I grew up in Richmond, IN, attended Richmond High School until my Junior Year and our family moved to New Castle, IN where I graduated from high school and remained for many years. After high school graduation, I attended Muncie Business College for a year, married, and several years later had a son, Bob. Family has always been the most important part of my life and as Bob was growing up I was fortunate enough not to work outside the home. When Bob was 3 or 4 years old I started working light, part time work at a country club as a bookkeeper. I did not change jobs until Bob started junior high and at that time I worked heavy, part time as a bookkeeper for two physicians. During that time, I kept very busy keeping up with basketball, softball games and tennis through his high school years. In Bob's college years we left him alone. After the physicians moved from New Castle, I applied to BSU and started working in the Dean of Students Office in the Administration Building in 1981. In 1982, I started working in the CPSY Department in the Counseling Clinic.

What have you enjoyed the most about working in the clinic?

I am only the second BSU employee who has worked in the clinic since the clinic opened in 1969 under Dr. Hutchinson. I have worked for four directors and have learned and grown in many ways in the last 27 years. I have had the support of the directors and Dr. Bowman to be able to take a couple of classes at the university and also expand my knowledge with taking Red Cross classes. I am constantly amazed at the new doctoral and master students who come in every year with their diversity, ambitions, and strengths. I have enjoyed implementing and working with clinic staff who have helped me create all the computerized clinic record keeping. Change is something that I have learned to embrace and move us into the digital video recording. If I would continue working I would enjoy the changes yet to come.

"Immediately after working my last day in the clinic the moving truck will be coming the next morning to move me to the south part of Indianapolis."

Do you have any particular interests or activities in your spare time?

I have worked for the Red Cross for the past ten years in the Armed Forces Emergency Services. Due to my father being in WW II and his duties overseas, I knew immediately that was my area. Taking many Red Cross courses and serving on state service area committees and representing Indiana for national conferences/training has helped me improve my skills working in the clinic. Being part of Hoosier Hysteria is something I was born with and continue to follow from high school athletics to professional sports.

What are some of your plans after you retire?

Immediately after working my last day in the clinic the moving truck will be coming the next morning to move me to the south part of Indianapolis. I will only be a couple of blocks from Greenwood. This move will enable me to participate in my son and his family's activities. Yeah, more ball games and stuff. I will still be close to the Anderson/Pendleton area where my family resides. Where I will work next is unknown and at the moment I have no idea. After a month off maybe I will know more.

Finally, I want to thank everyone for the great retirement party. The party was awesome and I will always be grateful. I will definitely miss the people here in the CPSY Department.



News from the Rehabilitation Counseling Program

Rehabilitation Counseling Practicum and Internship Students Making a Difference in their Communities

This year the Rehabilitation Counseling Practicum students are involved with the Indiana Vocational Rehabilitation Office in Anderson, IN and Disabled Student Development on the BSU campus. Rehabilitation Counseling internship students are working at such diverse sites as Butler University Counseling Center, Meridian Services, Ball State Practicum Clinic, Youth Opportunities Center, Ft. Wayne Veteran's Administration Hospital, Jay County Schools, and private practice. In addition to their practicum and internship placements, these students are involved in facilitating groups for seniors at Ashgrove Crossing, children with autism and their parents, and individuals with dual diagnosis through Meridian Services Connections program.

Rehabilitation Counseling Practicum Students Hold Disability Awareness Events

Rehabilitation Counseling students Aneta Leczycki and Russell McLean have been involved in planning and implementing disability awareness events through their practicum with BSU Disabled Student Development. On February 21st, Aneta facilitated the Cardinal Job Fair hireABILITY workshop sponsored by Disabled Student Development and the Career Center. The workshop was open to all students, with a special invitation to students with disabilities. Aneta covered such general concerns as preparing a resume and cover letter, as well as interviewing tips, including the issues of disability disclosure. Russell is planning an upcoming event to share information about chronic pain issues. Watch for flyers with more details.

Student Chapter of the Indiana Rehabilitation Association Recruitment Meeting

The IRA Student Chapter will hold a recruitment meeting on April 3rd at 5:00. Watch for flyers announcing the location or contact Amy Crane at alcrane@bsu.edu for more information.

Students Present at the Indiana Rehabilitation Association Annual Meeting

Six Rehabilitation Counseling and one Community track student presented posters at the Indiana Rehabilitation Association Annual Meeting in Indianapolis, November 29th. Students had a chance to share their research and network with rehabilitation professionals from across the state. Poster presentation topics included spirituality and disability, adoption of children with disabilities, and psychosocial and vocational issues related to various disabilities such as traumatic brain injury, autism spectrum disorders, and cancer.



(Left to Right)

Aneta Leczycki, Laura Oyer, Amy Crane (Community track), Kelly Lessel, Tabatha Lang, Brittany Madison, and Diane Parker pose with their posters.

Doctoral Internship Matches

Congratulations to our doctoral students who all got matched for internship!

Trent A. Barstad

University of Utah Neuropsychiatric In.
Salt Lake City, UT

Hongying Chen

Texas A&M University Counseling Center
College Station, TX

Timothy D. Gordon

University of Missouri-Columbia Counseling Center
Columbia, MO

Doris Ellen Kirkpatrick

Ball State University Counseling Center
Muncie, IN

Shana L. Markle

Butler University & Behavior Corp
Indianapolis, IN

Valerie J. Minchala

University of Illinois/Urbana-Champaign Counseling
Center
Champaign, IL

Patricia M. Roy-Petrick

Family Counseling Center/Trinity Services
Joliet, IL

Jane C. Royse Roskowski

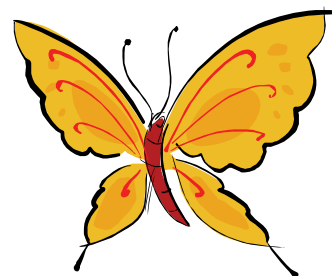
Western Michigan University Counseling Center
Kalamazoo, MI

Amanda L. Williams

St. Louis VA. Medical Center
St. Louis, MO

Dorothy A. Wright

Community Reach Center
Commerce City, CO



Job Opportunity

In connection with a national media research project, up to thirty-five temporary positions are available immediately through November 30, 2008 (40 hours/week as arranged). **Hourly rate \$20.00.**

Responsibilities: accurately conduct observational field research with a hand-held computer device; attend a thorough orientation and training session; support team members; maintain a flexible schedule and adapt to new working environments daily; review and analyze work using Excel; maintain strong communication with team members and supervisors.

Minimum qualifications: bachelor's degree or equivalent; at least three months of research experience and/or training in field research, observation or ethnographic research, focus group facilitation, face-to-face survey work and/or other research techniques acquired through academic experience or professional work; interested in media studies; willing to travel to and be at field locations for extended periods of time; possess a current valid driver's license; excellent organizational, communication and interpersonal skills; no extreme allergies to dogs or cats.

Preferred qualifications: bachelor's degree in a social science field; excellent project management skills; bilingual (English/Spanish). For consideration individuals **MUST** submit the following: COVER LETTER, RESUME, PROOF OF EDUCATION (transcripts preferred) and NAMES, ADDRESSES, and TELEPHONE NUMBERS of THREE PROFESSIONAL REFERENCES. This job will remain open until all positions are filled. Send or bring COMPLETE credential packet to:

University Human Resource Services
ATTN: TMRO
Administration Building, Room 350
Ball State University
Muncie, IN 47306



Alumni & Current Student News

Stacy Blankenbuehler, Ph.D. ('06) gave birth to her daughter, Delaney, on March 15th, 2007.

Terry Brown, CPSY doctoral student, and **Kristen Kernodle, M.A.** ('04) have set their wedding date: November 29, 2008. The wedding will be in Indianapolis.

Lisa Sims Browning, M.A. ('94), is currently enrolled as a second year doctoral student in Counseling Psychology at University of Georgia. She will be presenting her paper on Perceptions of students, parents, teachers and principals of the Empowered Youth Programs of school counselors. According to her, she is excited and nervous but feels very well prepared to move forward. Additionally, Lisa and her colleague have been accepted for a paper presentation regarding their experiences as women of color in a doctoral program.

Stacia Davis-Hill, Ph.D. ('00), and her husband David Hill had a healthy son on November 28, 2007. His name is Zyon Aric and their first son is named Zane.

Toni Gesler, M.A. ('01) and **Ph.D.** ('06), has a new position at Richmond State Hospital as a staff psychologist.

Ann P. Jackson, M.A. (00), got married in March 2005 to Ed Hales and on August 20, 2007 she gave birth to Lillian Catherine Hales. Ann is now a Licensed Professional Counselor and a National Certified Counselor and is working on a Screening, Triage, and Referral Line for MH/SA/DD services. She really likes crisis work and has come to love assessment.

Vance Jackson, CPSY doctoral student and Ann P. Jackson's brother, is married to **Amy Young, M.A.** ('04). He is currently teaching at Green Mountain College in Vermont.

Heather Anderson Klein, Ph.D. ('05) just became a licensed psychologist in Minnesota and is beginning her private practice at the Kenwood Therapy Center in Minneapolis, MN. She primarily utilizes narrative and solution-focused approaches.

Liberty Lloyd, M.A. ('02), and her husband, Jeff Noble, had a daughter, Leah Grace Noble, on August 30, 2007.

Angel Love, M.A. ('04), moved to Florida shortly after graduation and had a daughter, Amaya Annice Love Hutchinson, in April 2005. Angel has been working as a family therapist for an outreach program in Clearwater, Florida.

Jody Nixon, Ph.D. ('01), her husband, Craig, and daughter, Sydney, welcomed Noah Cooper into their family on October 15, 2007.

Jill R. Scheckel, M.A. ('92) and **Ph.D.** ('96), assumed command of the 72nd Medical Operations Squadron at Tinker Air Force Base on July 20, 2007. Before going to Tinker, Jill was a Behavioral Health Consultant at the Air Combat Command surgeon's office where she led more than 300 people across 16 Air Force bases. She is now a Colonel-Select and is expected to be promoted to Colonel in the near future. She is married to Steven Scheckel, M.A. ('93).

Michelle A. Sebastian, M.A. ('00) is a School Counselor at Muncie Central High School and loves her job and the students.

Christine L. Smith, Ph.D. ('04) left her psychologist position at Auburn University's counseling center in July 2007, and became the new Director of Counseling Services at Clayton State University, located in the Atlanta suburbs.

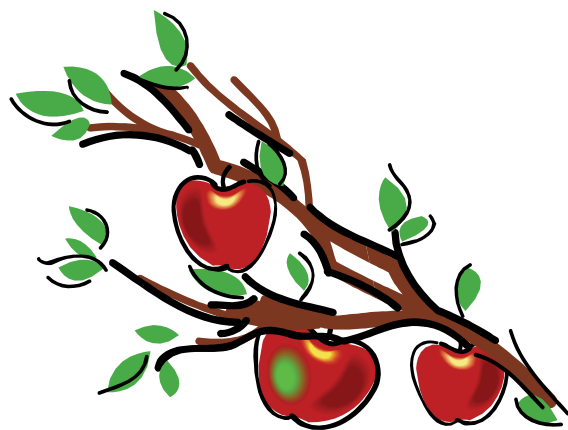


At A Glance

Monday, March 24	Current students may begin making requests through April 8 for fall 2008 classes.
Tuesday, April 8	End of course requests for fall 2008 courses.
Monday, April 21	Students can view their fall 2008 course request results and begin making schedule adjustments on the Web.
Friday, April 25	Last meeting day for regular classes
Saturday, April 26	Final examination period for Saturday classes
Monday, April 28 – Friday, May 2	Final exams
Friday, May 2	Spring semester ends.
Saturday, May 3	May Commencement (graduation). Visit www.bsu.edu/commencement for details.
Monday, May 5	Faculty must turn in grades by noon.
Tuesday, May 6	Grades for on-campus students are available on the Web.
Thursday, May 8	Grades for off-campus students are available on the Web.
Monday, May 12	University classes for all-summer and first summer sessions begin
Friday, May 16	Late registration and change-of-course end
Monday, May 26	Memorial Day – no classes
Monday, June 23	Course withdrawal period ends. Instructor's permission is not required.
Friday, July 4	Independence Day – no classes
Friday, July 18	Summer Semester ends
Saturday, July 19	July Commencement (graduation). Visit www.bsu.edu/commencement for details.
Monday, July 21	Grades due at noon
July 21-August 20	Summer extended period

New Faculty Member

Jeong Han Kim will be joining our faculty in the fall of 2008. He is a Certified Rehabilitation Counselor and will be receiving his Ph.D. from the University of Wisconsin-Madison.



Upcoming Conferences & Workshops

American Counseling Association (ACA)

Annual Conference & Exposition

March 26-30, 2008

Honolulu, HI

www.counseling.org/convention

Great Lakes Counseling Psychology Conference

2008 Conference

June 6 - 7, 2008

Grand Rapids, MI

www.wmich.edu/coe/cecp/greatlakes/index.htm

American College Personnel Association

Annual Convention

March 29 - April 2, 2008

Atlanta, GA

www.convention.myacpa.org

American School Counselor Association (ASCA)

Annual Conference

June 28-July 1, 2008

Atlanta, GA

www.schoolcounselor.org

Indiana Counseling Association (ICA)

Annual Conference

April 20 - 21, 2008

Indianapolis, IN

www.indianacounseling.org

American Mental Health Counselors Association

(AMHCA)

2008 Conference

July 17-19, 2008

San Diego, CA

www.amhca.org

Midwestern Psychological Association

2008 Annual Meeting

May 1-3, 2008

Chicago, IL

www.midwesternpsych.org



Upcoming Opportunities

1ST SUMMER SEMESTER 2008 COURSE ADDITIONS:

CPSY 690-002

Psychopharmacology

Taught by Dr. Donald Nicholas

Time: 2:00 - 6:00 p.m. on T, R

Location: TC, 002

CPSY 690-006

Eating Disorders

Taught by Dr. Kim Gorman

Time: 4:00 - 8:00 p.m. on M, W

Location: Lucina Hall, 327

2ND SUMMER SEMESTER 2008 COURSE ADDITIONS:

CPSY 690-002

Affirmative Therapy

Taught by Dr. Gina Zanardelli

Time: 4:30 - 8:30 p.m. on T, R

Location: Lucina Hall, 320

Attention: Graduating Master's Students

In order to graduate you must apply for graduation at the Graduate School by the deadline in the semester you intend to graduate.

Graduation Application Deadline:

For Summer 2008	June 2, 2008
For Fall 2008	September 22, 2008

Deadline for Receipt of Research Papers, Creative Projects, Theses, and Dissertations:

For Spring 2008	April 7, 2008
For Summer 2008	July 7, 2008
For Fall 2008	November 24, 2008

Applications submitted after the deadline may be switched to the following semester for graduation (students do not have to reapply for graduation). Please see the Graduate School's web site www.bsu.edu/gradschool for forms and more information.

CPSY Foundation Funds, by Dr. Bowman

In the fall newsletter I mentioned the Cheryl Hofherr Memorial Fund, to support bringing a rehabilitation-focused speaker to campus. I promised that the spring newsletter would address two other funds that are also designated for CPSY use. The Peter Cacavas Scholarship Fund was created in the name of a former social psychology professor. It is designed to provide research funds for CPSY social psych students conducting their own research. You KNOW how important every little dollar can be when making copies, affixing postage or purchasing copyrighted instruments on a student budget; here's a way to "pay it forward."

Some of you may prefer to donate some tax-deductible funds to the Department to use at our discretion, funds that could be used as seed money for conferences, paying for meals for student receptions, or co-sponsorship of relevant on- or off-campus events. Please consider donating to the CPSY General Fund through the Foundation. Your gift will be appreciated more than you could possibly know!

We appreciate your generous support of CPSY at Ball State University. If you have any questions regarding making a gift to the department please feel free to contact Karen Staley, Director of Development, at 765-285-7056 or via email at kjstaley@bsu.edu

You can also go to our web page at www.bsu.edu/counselingpsychology and hit the link to "Make a Gift."

Gifts may be made to the General Fund, the Hofherr Fund, or the Cacavas Fund.



Department of Counseling Psychology and
Guidance Services
Teachers College
Room 622
Muncie, IN 47306

Phone: 765-285-8040
Fax: 765-285-2067
E-mail: cpsy@bsu.edu
www.bsu.edu/counselingpsychology

KEEP IN TOUCH!

We continue to be very curious about what our current students and alumni are up to so
keep those announcements coming!

The Keep In Touch Form is now online at www.bsu.edu/counselingpsychology